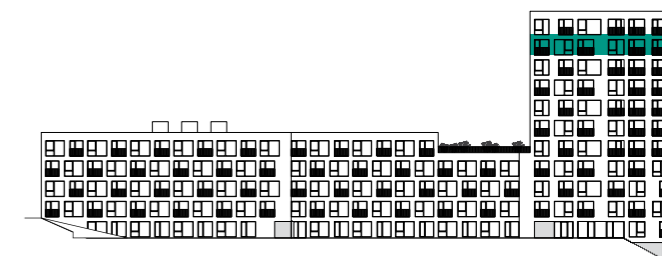
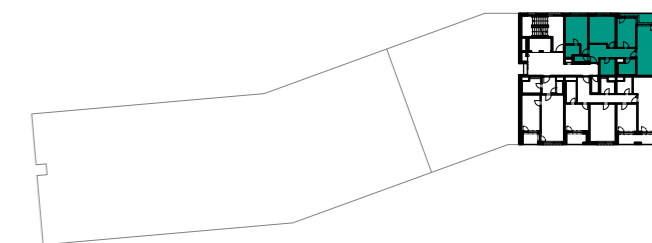




ULIČNÍ POHLED | BUILDING VIEW



PLÁN PODLAŽÍ | FLOOR PLAN



| | | |
|--------------------------------------|---------------------------------------|----------------------------|
| 1 | Předsíň Hall | 12,9 m ² |
| 2 | Ložnice Bedroom | 15,4 m ² |
| 3 | Pokoj Room | 16,3 m ² |
| 4 | Pokoj Room | 12,6 m ² |
| 5 | Obývací pokoj + kk Living room + kk | 32,5 m ² |
| 6 | Koupelna Bathroom | 5,4 m ² |
| 7 | Komora Storage | 5,6 m ² |
| 8 | WC Toilet | 2,0 m ² |
| 9 | Koupelna Bathroom | 3,5 m ² |
| UŽITNÁ PLOCHA / NET AREA | | 106,1 m² |
| PODLAHOVÁ PLOCHA / GROSS AREA | | 112,6 m² |
| 10 | Lodžie Loggia | 7,9 m ² |