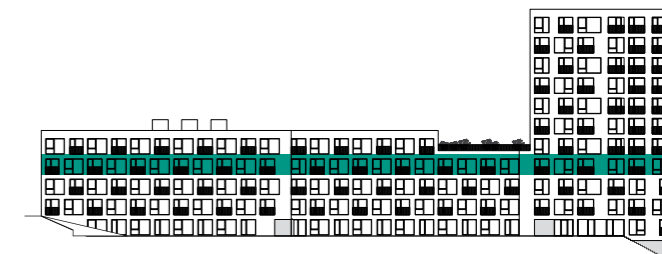
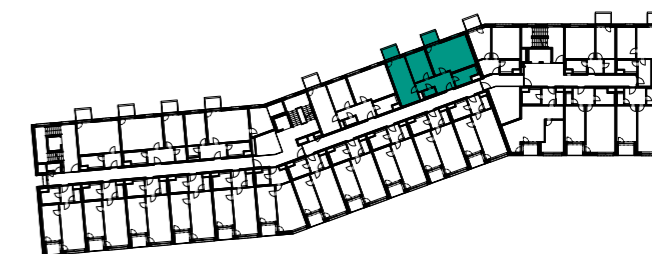




ULIČNÍ POHLED | BUILDING VIEW



PLÁN PODLAŽÍ | FLOOR PLAN



1	Předsíň   Hall	10,8 m <sup>2</sup>
2	WC   Toilet	1,8 m <sup>2</sup>
3	Ložnice   Bedroom	19,4 m <sup>2</sup>
4	Pokoj   Room	12,6 m <sup>2</sup>
5	Obývací pokoj + kk   Living room + kk	27,8 m <sup>2</sup>
6	Koupelna   Bathroom	6,5 m <sup>2</sup>
<b>UŽITNÁ PLOCHA / NET AREA</b>		<b>78,9 m<sup>2</sup></b>
<b>PODLAHOVÁ PLOCHA / GROSS AREA</b>		<b>83,3 m<sup>2</sup></b>
7	Balkon   Balcony	3,8 m <sup>2</sup>
8	Balkon   Balcony	3,8 m <sup>2</sup>