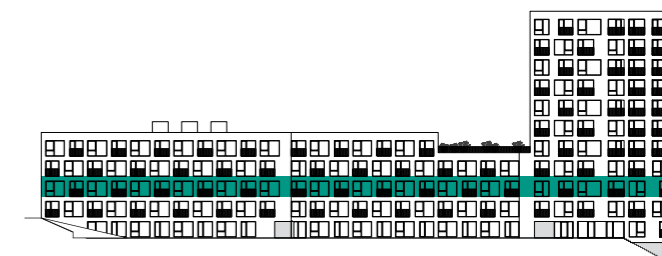
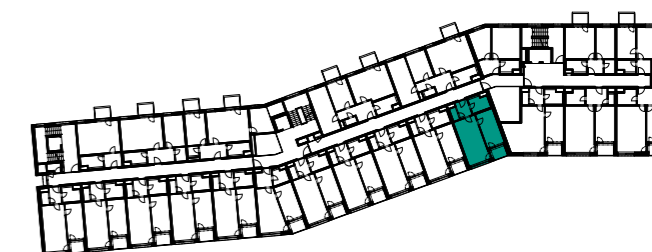


ULIČNÍ POHLED | BUILDING VIEW



PLÁN PODLAŽÍ | FLOOR PLAN



1	Předsíň   Hall	6,8 m <sup>2</sup>
2	Koupelna   Bathroom	6,0 m <sup>2</sup>
3	Ložnice   Bedroom	14,1 m <sup>2</sup>
4	Obývací pokoj + kk   Living room + kk	23,0 m <sup>2</sup>
<b>UŽITNÁ PLOCHA / NET AREA</b>		<b>49,9 m<sup>2</sup></b>
<b>PODLAHOVÁ PLOCHA / GROSS AREA</b>		<b>52,4 m<sup>2</sup></b>
5	Lodžie   Loggia	4,0 m <sup>2</sup>